

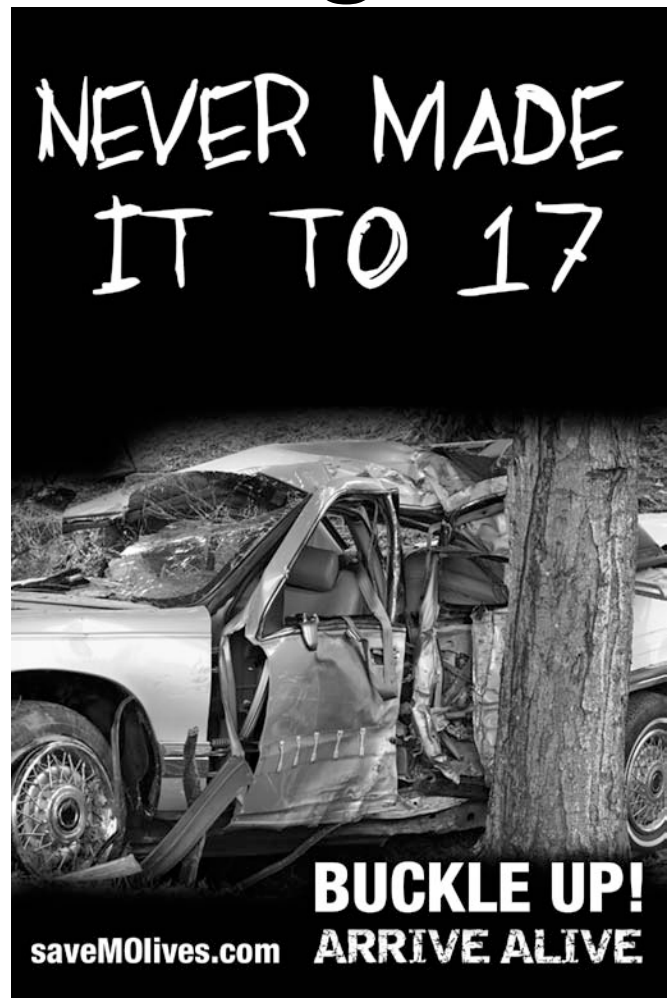


Risk Factors In Teen Driving Crashes

Monique Sheppard, PhD

Children's Safety Network

Economics and Data Analysis Resource Center



Motor Vehicle Data Sources

- Data sets that can be assessed and analyzed for teen driving safety that include:
 - Youth and Behavioral Risk Factor Surveillance Systems
 - Child Death Review
 - Emergency department
 - Uniform Crime Reporting System
 - Fatality Analysis Reporting System (FARS)
 - Emergency Medical Services
 - State Highway Patrol
 - Hospital Discharge Data
 - Mortality Data



Risk Factors

- Immaturity
- Inexperience
- Immortality
- Emotionality
- Sensation Seeking/
Risk Taking
- Power of Friends
- Power of Parents
- Distracted Driving





Risk Factors

Seat Belt Use

Night Driving

Driver Error

Traffic

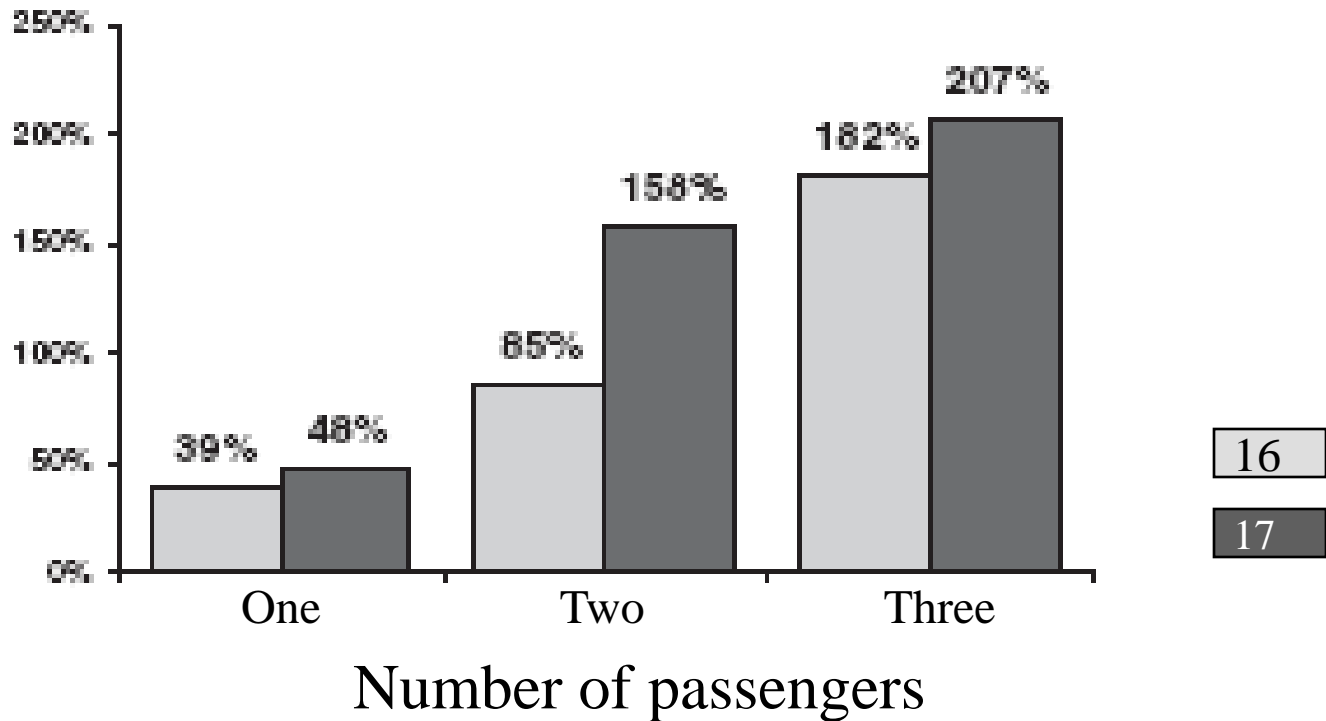
Passengers

Impaired Driving (alcohol/drugs)

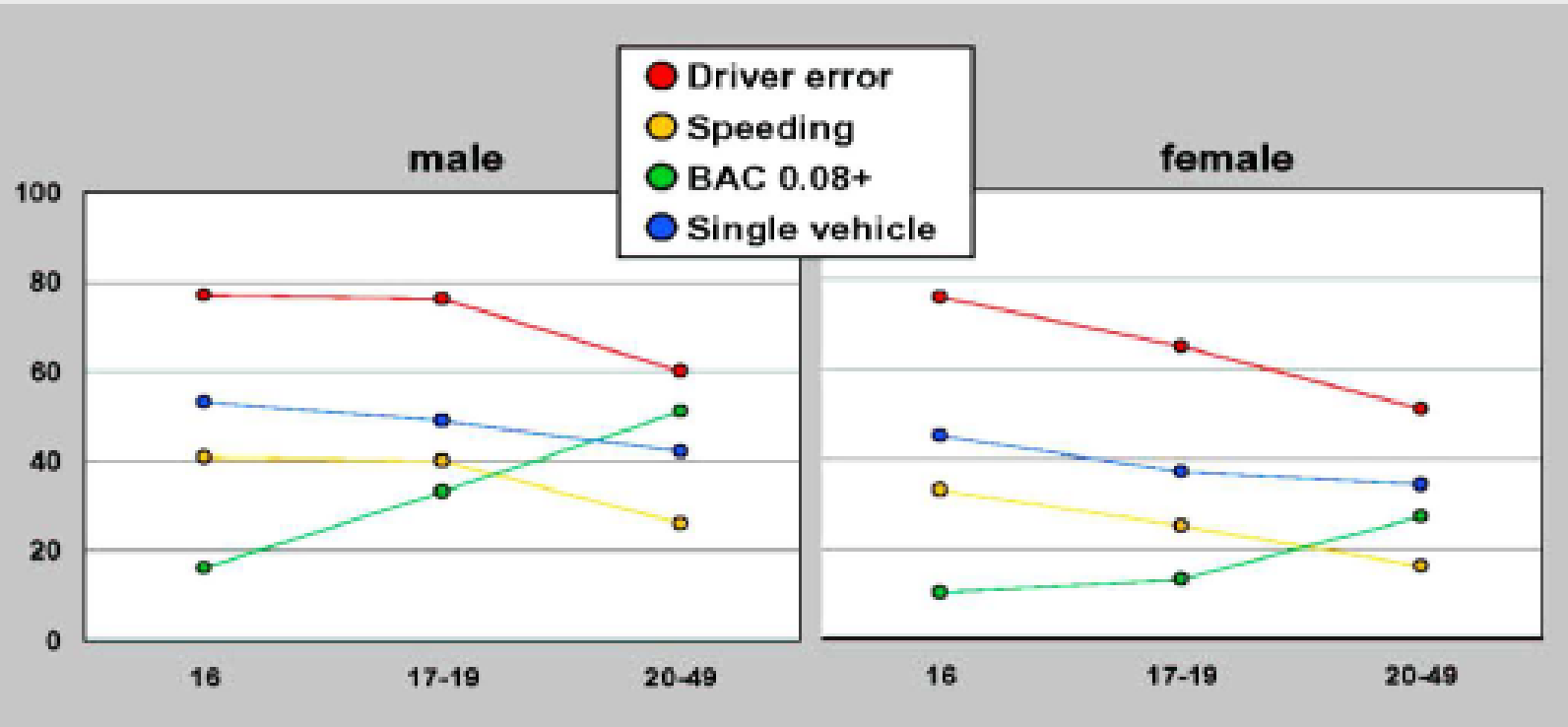
Speeding/Aggressive Driving



Increased risk of 16 & 17 year old drivers' death by number of passengers, Chen, Baker, Braver, and Li, 2000



Factors in teen fatal crashes



IIHS, 2003

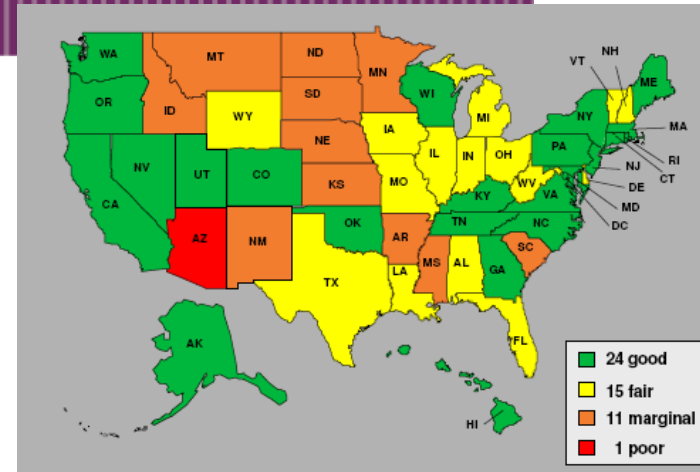
What Works

- **Publicize, enforce, & adjudicate laws pertaining to young drivers**
- Assist parents in managing teen driving
- Improve young driver training
- Employ school-based strategies



Graduated Driver Licensing (GDL) System

- Minimum age of **at least 16 years** for gaining a learner's permit
- Minimum **6 months** before unsupervised driving.
- Nighttime driving restriction
- Passenger restriction for intermediate license holders
- Minimum age of **at least 16 years and 6 months** for intermediate license.
- **Minimum age of 17 years** for full licensure.



International Institute for Highway
Safety

References

- <http://www.nhtsa.dot.gov/people/injury/NewDriver/TeenBeltUse/images/DOHS809899TeenBeltUse.pdf>
- http://www.nap.edu/catalog.php?record_id=11814
- Access to NRC workshop slides: <http://www.bocyf.org/051506.html>
- <http://www.nhtsa.dot.gov/people/injury/airbags/OccupantProtectionFactors/introduction.htm#how>
- http://stokes.chop.edu/programs/injury/files/PCPS_Reports/1289teen.pdf
- -
- <http://www.cdc.gov/healthyyouth/yrbs/>
- <http://www.iihs.org/>



Contact Information

Web site: www:ChildrensSafetyNetwork.org

301-755-2728

Children's Safety Network

Economics and Data Analysis Resource Center

11720 Beltsville Drive, Suite 900

Calverton, MD 20705

sheppard@pire.org